

# Aerial Map



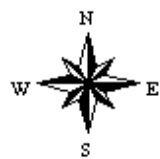
map center: 38° 22' 7.37, -89° 59' 7.08

0ft 512ft 1024ft



Maps Provided By:  
**surety**  
CUSTOMIZED ONLINE MAPPING  
© AgriData, Inc. 2018 www.AgriDataInc.com

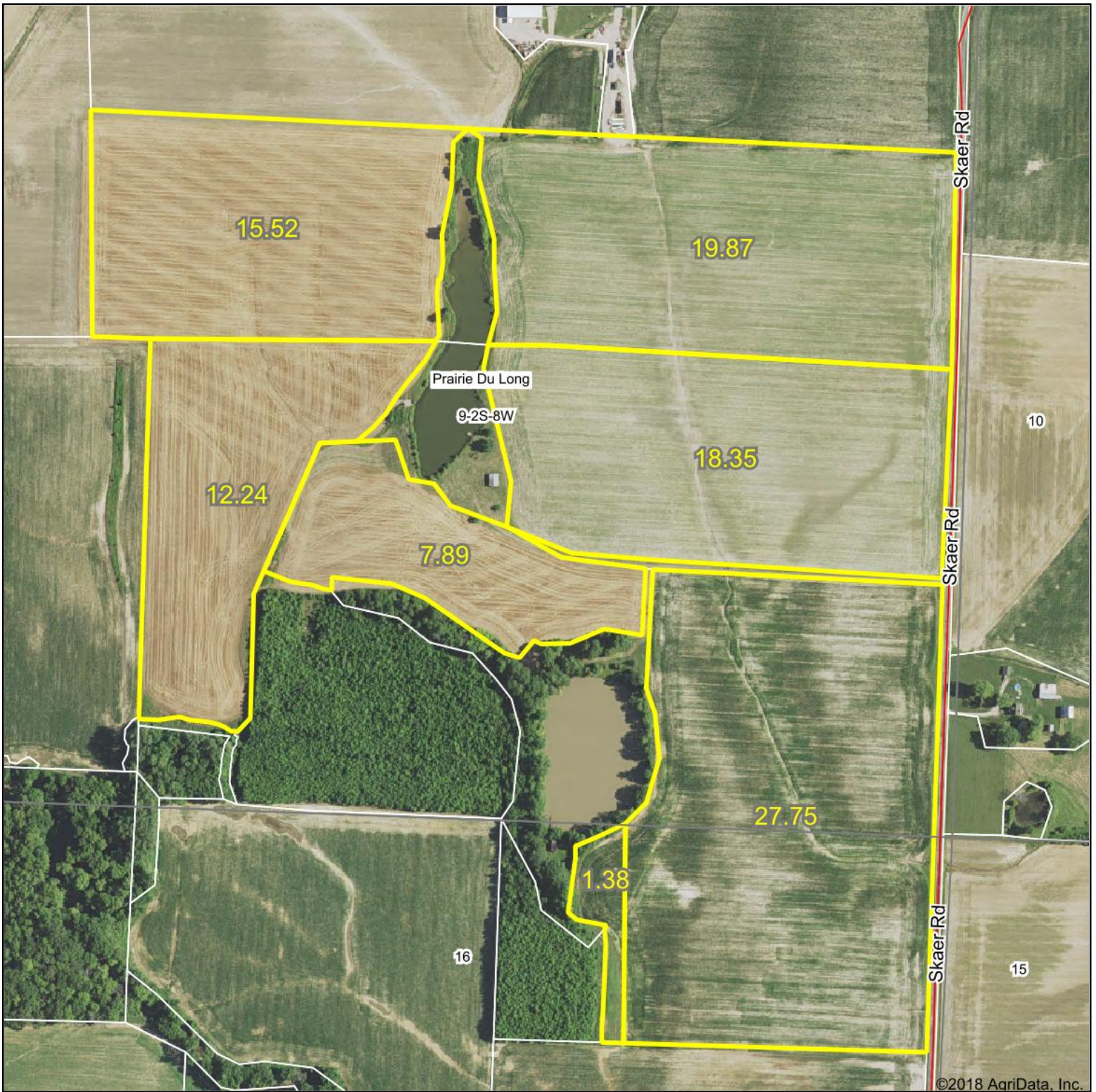
**9-2S-8W**  
**St Clair County**  
**Illinois**



4/12/2018



# Aerial Map



©2018 AgriData, Inc.

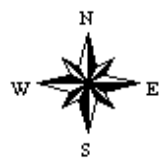
map center: 38° 22' 7.58, -89° 59' 6.88

0ft 459ft 919ft



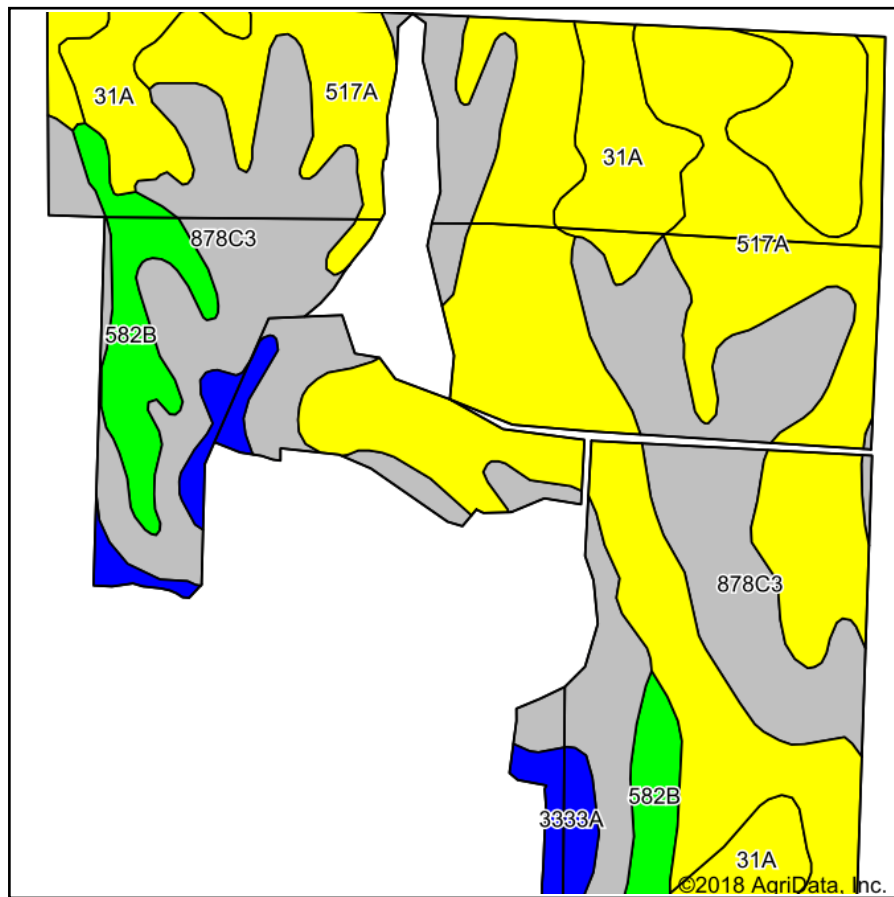
Maps Provided By:  
**surety**  
CUSTOMIZED ONLINE MAPPING  
© AgriData, Inc. 2018 www.AgriDataInc.com

**9-2S-8W**  
**St Clair County**  
**Illinois**

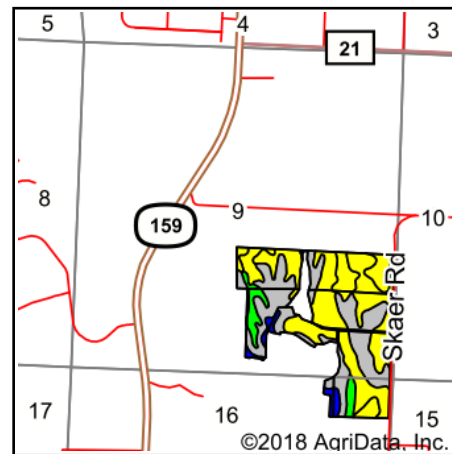


4/10/2018

# Soils Map



Soils data provided by USDA and NRCS.



State: **Illinois**  
 County: **St Clair**  
 Location: **9-2S-8W**  
 Township: **Prairie Du Long**  
 Acres: **103**  
 Date: **4/10/2018**



Maps Provided By:  
  
 CUSTOMIZED ONLINE MAPPING  
 © AgriData, Inc. 2018 www.AgriDataInc.com



## Area Symbol: IL163, Soil Area Version: 9

Code	Soil Description	Acres	Percent of field	Il. State Productivity Index Legend	Corn Bu/A	Soybeans Bu/A	Wheat Bu/A	Alfalfa <sup>d</sup> hay, T/A	Crop productivity index for optimum management
517A	Marine silt loam, 0 to 2 percent slopes	43.86	42.6%		144	45	56	3.39	104
**878C3	Coulterville-Grantfork silty clay loams, 5 to 10 percent slopes, severely eroded	35.88	34.8%		**101	**33	**37	0.00	**75
31A	Pierron silt loam, 0 to 2 percent slopes	13.65	13.3%		136	43	55	0.00	102
**582B	Homen silt loam, 2 to 5 percent slopes	6.11	5.9%		**149	**47	**55	**3.72	**108
3333A	Wakeland silt loam, 0 to 2 percent slopes, frequently flooded	3.50	3.4%		174	56	68	0.00	128
Weighted Average					129.3	41	49.6	1.66	94.7

**Table: Optimum Crop Productivity Ratings for Illinois Soil by K.R. Olson and J.M. Lang, Office of Research, ACES, University of Illinois at Champaign-Urbana.** Version: 1/2/2012 Amended Table S2 B811

Crop yields and productivity indices for optimum management (B811) are maintained at the following NRES web site: <http://soilproductivity.nres.illinois.edu/>

\*\* Indexes adjusted for slope and erosion according to Bulletin 811 Table S3

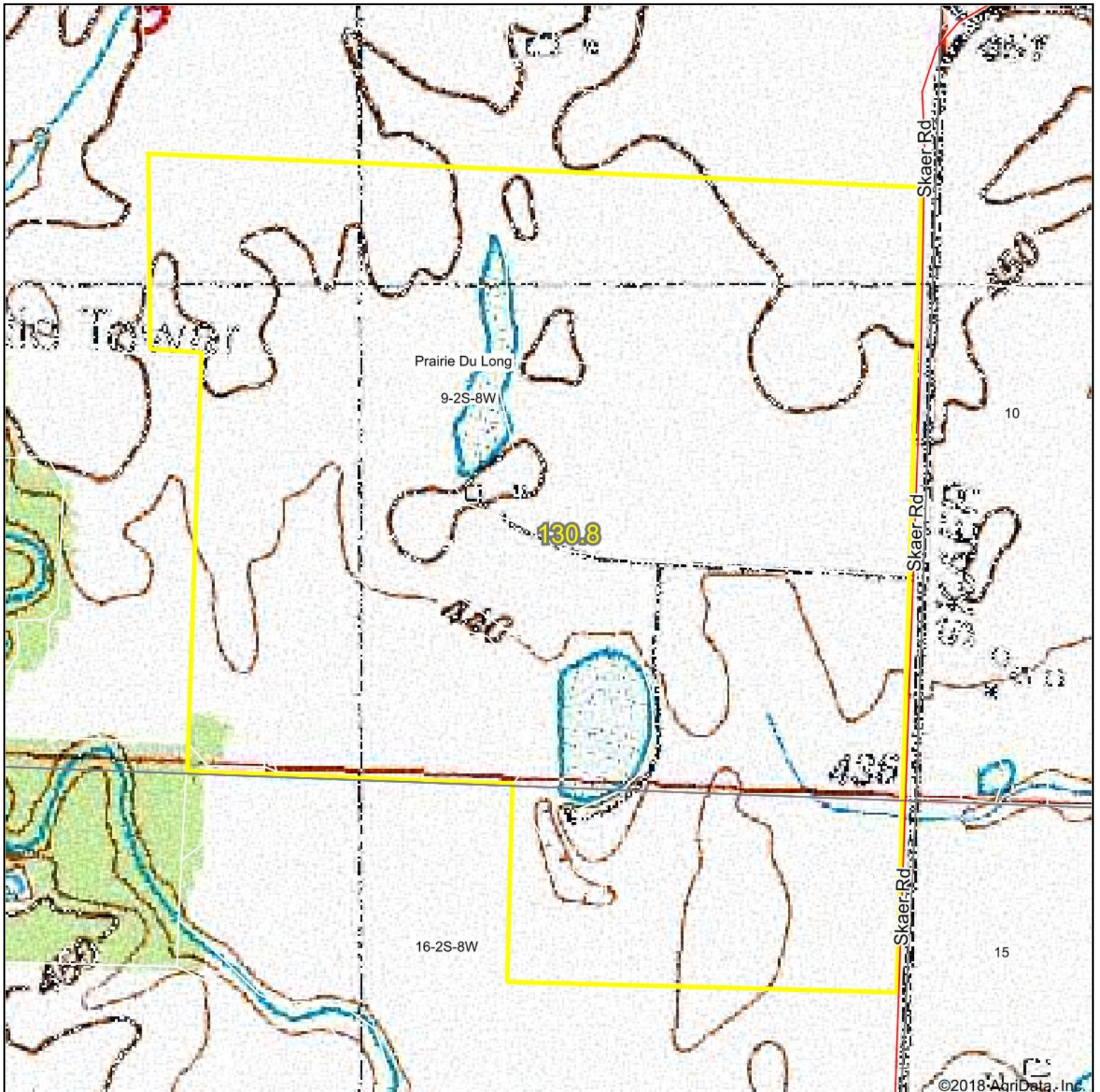
<sup>d</sup> Soils in the poorly drained group were not rated for alfalfa and are shown with a zero "0".

Soils data provided by USDA and NRCS. Soils data provided by University of Illinois at Champaign-Urbana.

\*c: Using Capabilities Class Dominant Condition Aggregation Method



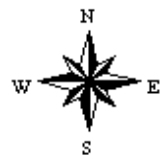
# Topography Map



map center: 38° 22' 7.37, -89° 59' 7.08

0ft 512ft 1024ft

**9-2S-8W**  
**St Clair County**  
**Illinois**



4/12/2018



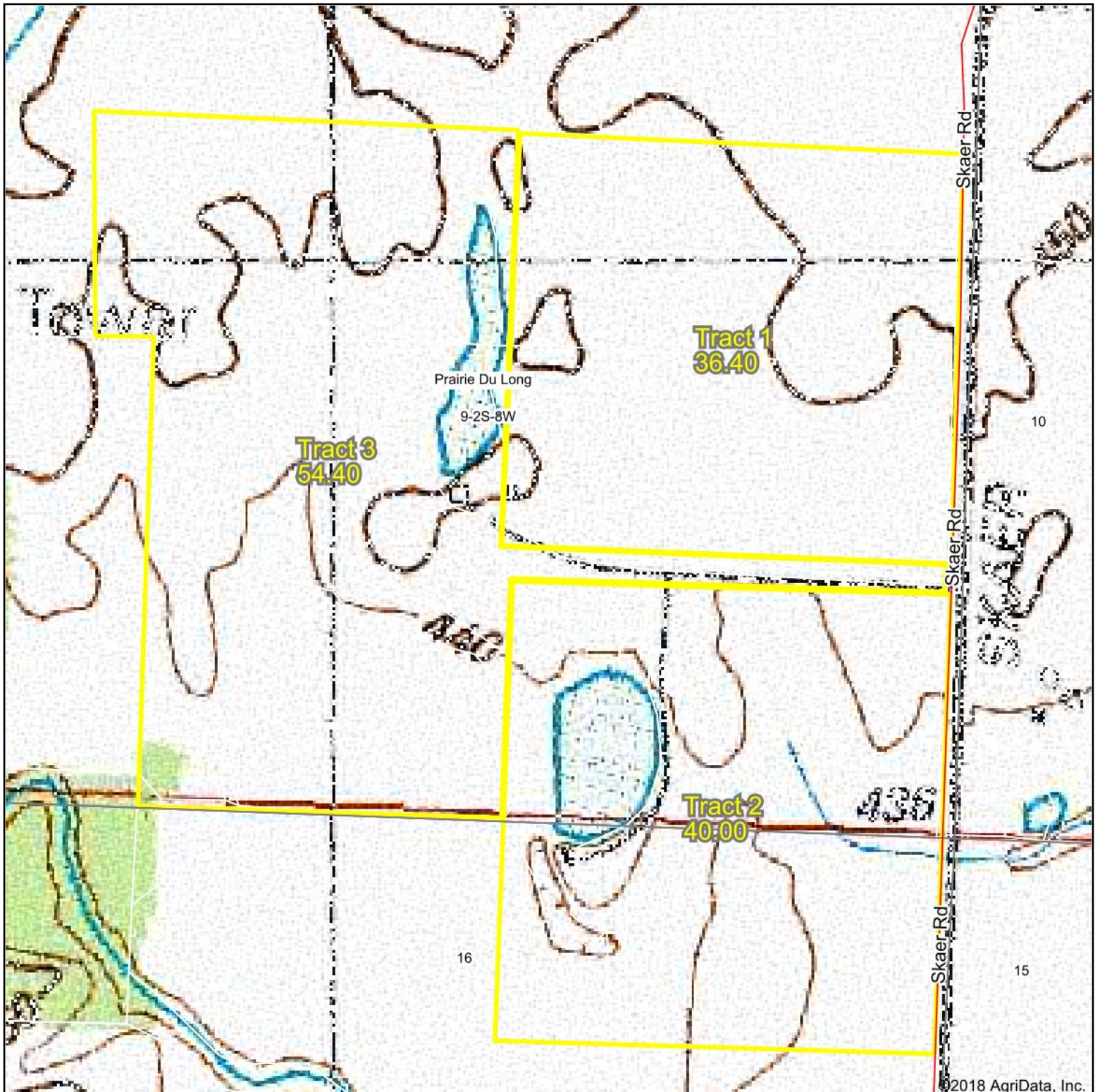
Maps Provided By:



© AgriData, Inc. 2018 www.AgrIDataInc.com



# Topography Map



©2018 AgriData, Inc.

map center: 38° 22' 7.58, -89° 59' 6.88

0ft 459ft 919ft



Maps Provided By:



© AgriData, Inc. 2018

www.AgrIDataInc.com

**9-2S-8W**  
**St Clair County**  
**Illinois**



4/10/2018