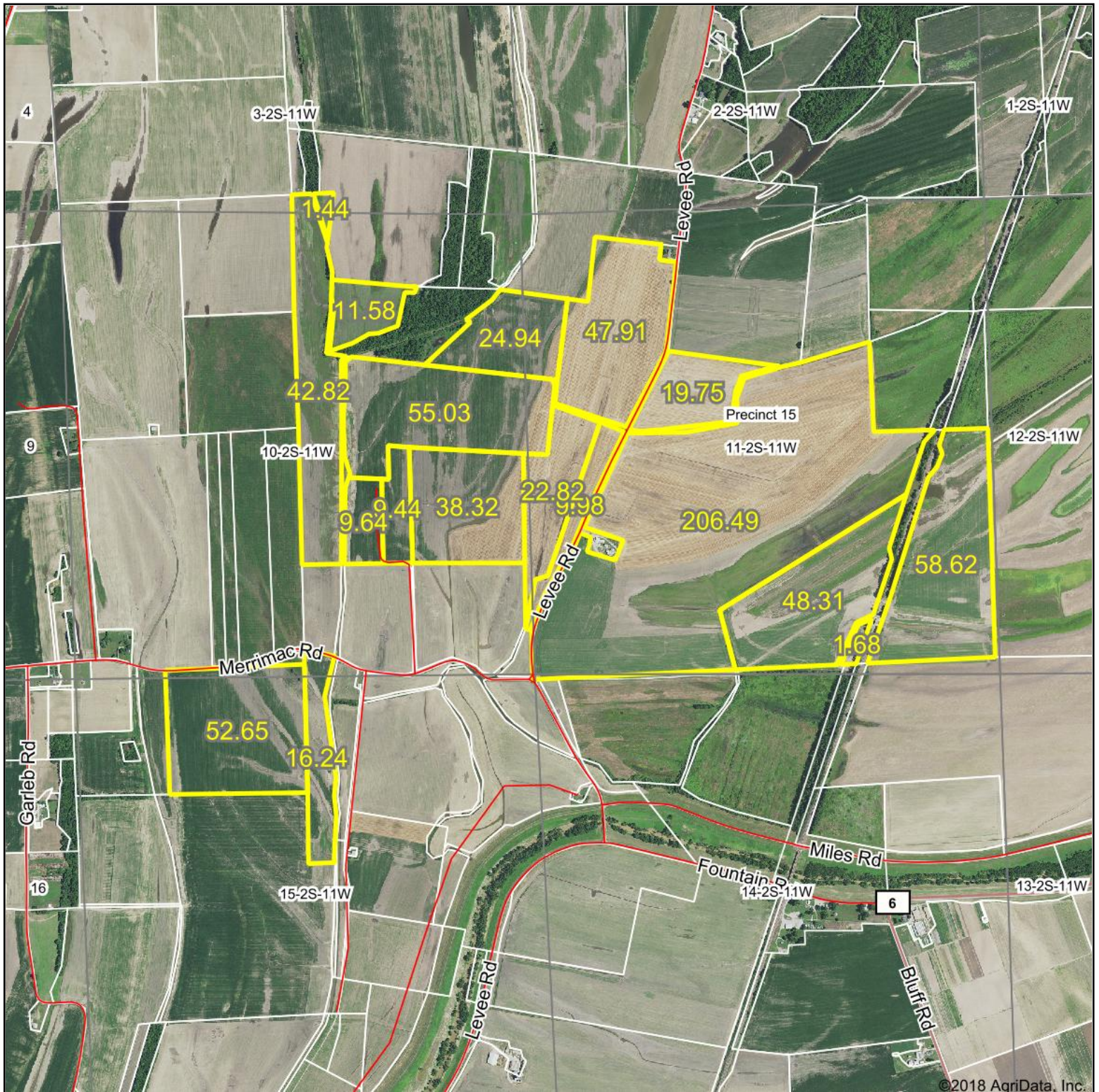


Aerial Map



©2018 AgriData, Inc.



Maps Provided By:
surety
 CUSTOMIZED ONLINE MAPPING
 © AgriData, Inc. 2018 www.AgriDataInc.com

map center: 38° 22' 25.72, -90° 17' 37.06

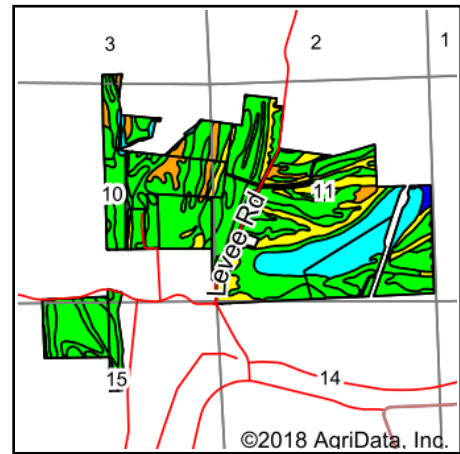
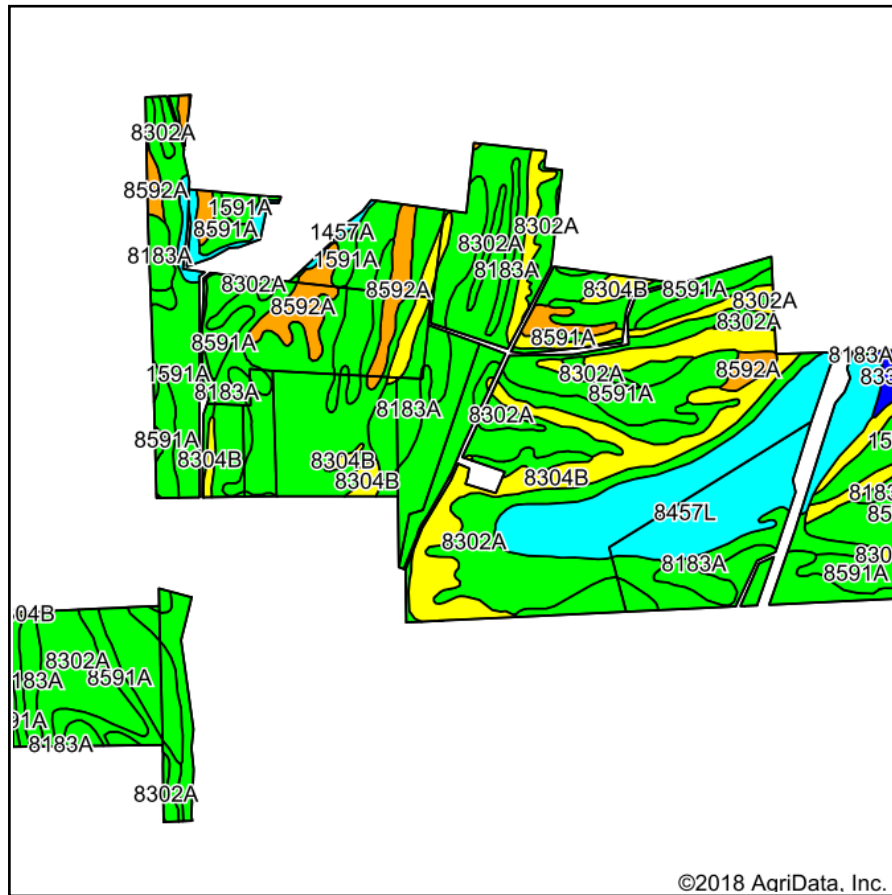
0ft 1781ft 3563ft

11-2S-11W
Monroe County
Illinois



10/3/2018

Soils Map



State: **Illinois**
 County: **Monroe**
 Location: **11-2S-11W**
 Township: **Precinct 15**
 Acres: **677.66**
 Date: **10/3/2018**



Maps Provided By:

 CUSTOMIZED ONLINE MAPPING
 © AgriData, Inc. 2018 www.AgriDataInc.com



Area Symbol: IL133, Soil Area Version: 10

| Code | Soil Description | Acres | Percent of field | Il. State Productivity Index Legend | Corn Bu/A | Soybeans Bu/A | Wheat Bu/A | Alfalfa ^d hay, T/A | Crop productivity index for optimum management |
|------------------|--|--------|------------------|-------------------------------------|-----------|---------------|------------|-------------------------------|--|
| 8591A | Fults silty clay, 0 to 2 percent slopes, occasionally flooded | 188.40 | 27.8% | | 155 | 50 | 59 | 0.00 | 115 |
| 8302A | Ambraw silty clay loam, 0 to 2 percent slopes, occasionally flooded | 151.87 | 22.4% | | 154 | 50 | 61 | 0.00 | 114 |
| 8183A | Shaffton clay loam, 0 to 2 percent slopes, occasionally flooded | 91.40 | 13.5% | | 155 | 51 | 60 | 0.00 | 116 |
| 8304B | Landes very fine sandy loam, 2 to 5 percent slopes, occasionally flooded | 81.95 | 12.1% | | 135 | 45 | 55 | 3.39 | 100 |
| 8457L | Booker clay, 0 to 2 percent slopes, occasionally flooded, long duration | 77.54 | 11.4% | | 116 | 41 | 44 | 0.00 | 89 |
| 1591A | Fults silty clay, undrained, 0 to 2 percent slopes, occasionally flooded | 42.93 | 6.3% | | 155 | 50 | 59 | 0.00 | 115 |
| 8592A | Nameoki silty clay, 0 to 2 percent slopes, occasionally flooded | 30.06 | 4.4% | | 163 | 51 | 63 | 0.00 | 120 |
| 1457A | Booker clay, undrained, 0 to 2 percent slopes, occasionally flooded | 7.12 | 1.1% | | 116 | 41 | 44 | 0.00 | 89 |
| 8038B | Rocher loam, 2 to 5 percent slopes, occasionally flooded | 3.35 | 0.5% | | 151 | 47 | 58 | 3.64 | 109 |
| 8333A | Wakeland silt loam, 0 to 2 percent slopes, occasionally flooded | 3.04 | 0.4% | | 174 | 56 | 68 | 0.00 | 128 |
| Weighted Average | | | | | 147.9 | 48.5 | 57.4 | 0.43 | 110.1 |

Table: Optimum Crop Productivity Ratings for Illinois Soil by K.R. Olson and J.M. Lang, Office of Research, ACES, University of Illinois at Champaign-Urbana. Version: 1/2/2012 Amended Table S2 B811

Crop yields and productivity indices for optimum management (B811) are maintained at the following NRES web site: <http://soilproductivity.nres.illinois.edu/>

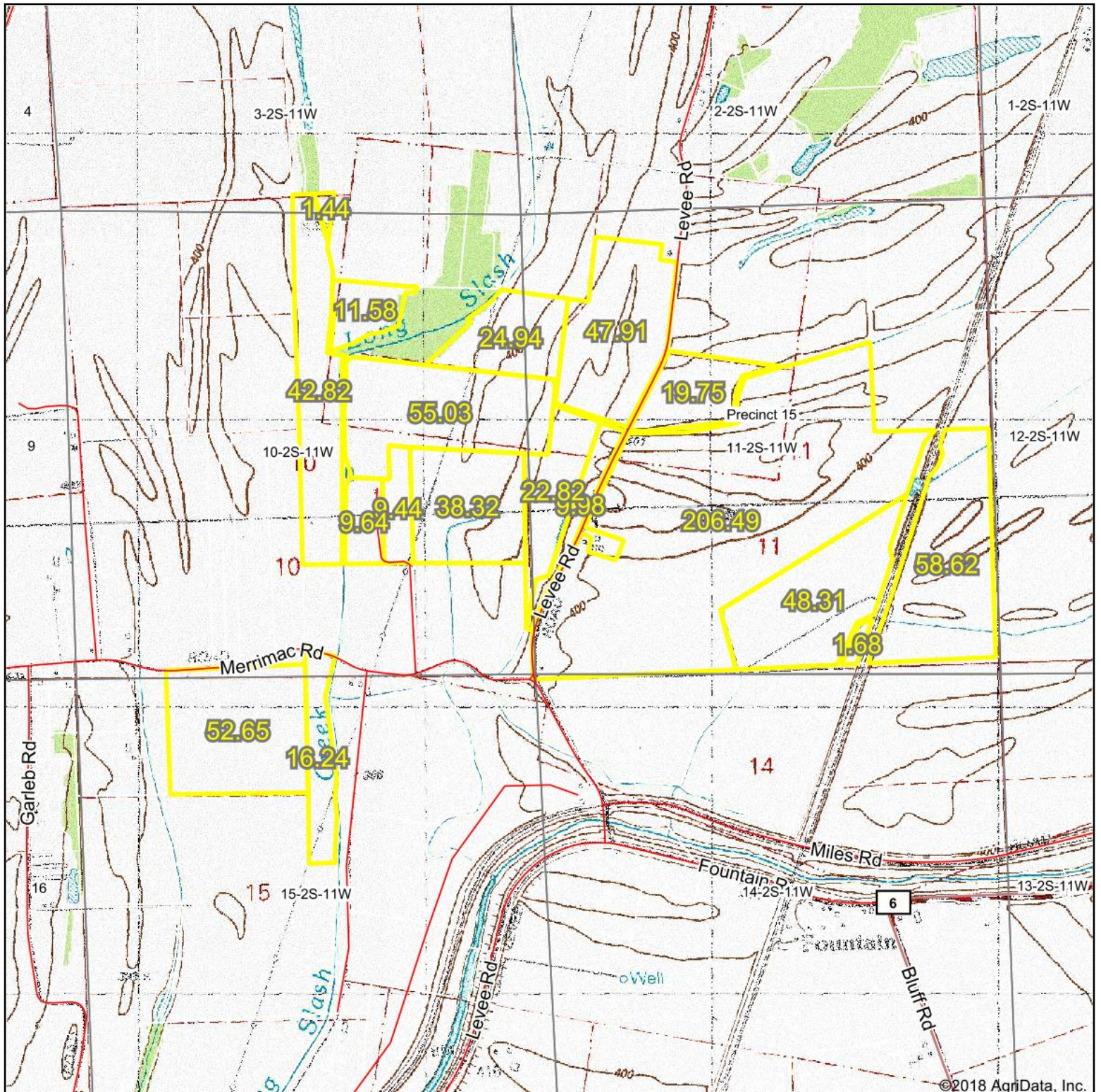
** Indexes adjusted for slope and erosion according to Bulletin 811 Table S3

^d Soils in the poorly drained group were not rated for alfalfa and are shown with a zero "0".

*c: Using Capabilities Class Dominant Condition Aggregation Method

Soils data provided by USDA and NRCS. Soils data provided by University of Illinois at Champaign-Urbana.

Topography Map

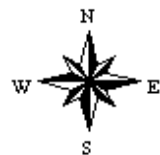


©2018 AgriData, Inc.

map center: 38° 22' 25.72, -90° 17' 37.06

0ft 1781ft 3563ft

11-2S-11W
Monroe County
Illinois



10/3/2018



Maps Provided By:



© AgriData, Inc. 2018

www.AgridataInc.com