

Aerial Map



Maps Provided By:
 **surety**
CUSTOMIZED ONLINE MAPPING
© AgriData, Inc. 2018 www.AgriDataInc.com

map center: 38° 22' 3.3, -90° 18' 20.58

15-2S-11W
Monroe County
Illinois

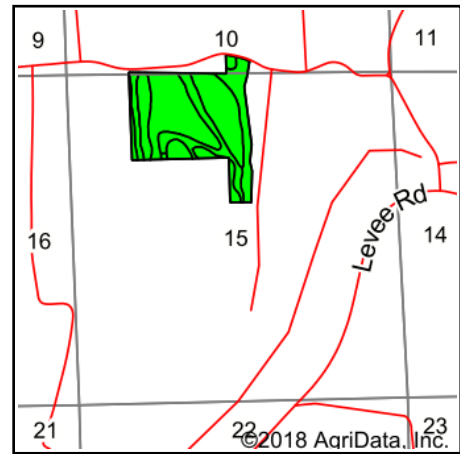
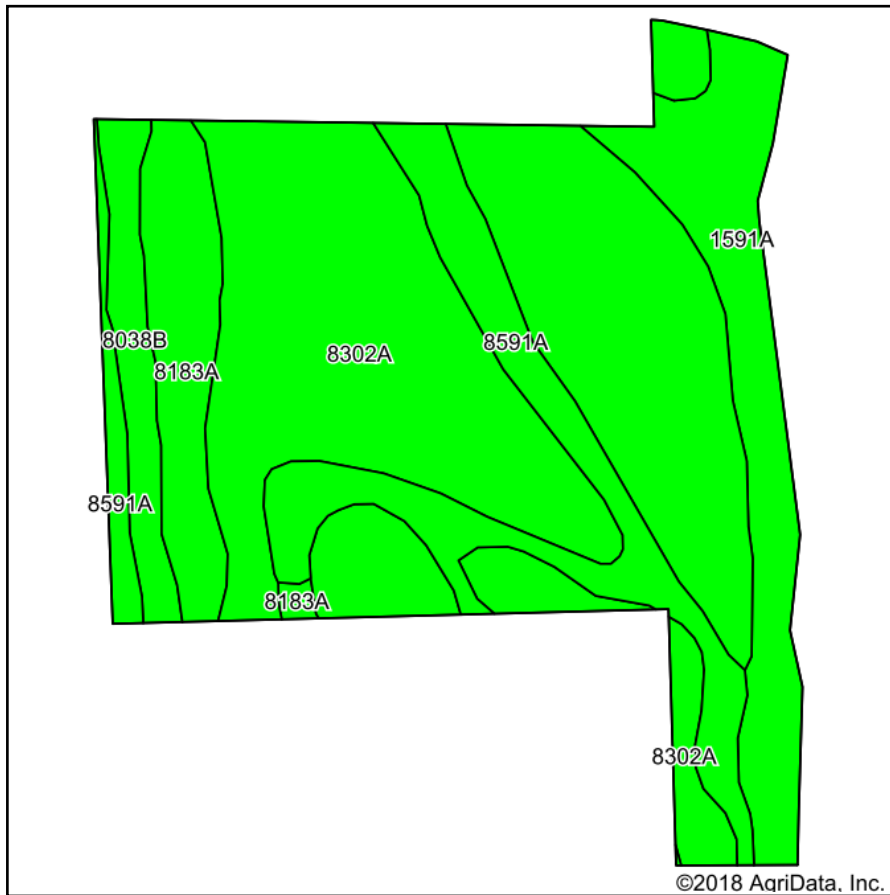
0ft 404ft 807ft



9/24/2018

Soils data provided by University of Illinois at Champaign-Urbana.

Soils Map



State: **Illinois**
 County: **Monroe**
 Location: **15-2S-11W**
 Township: **Precinct 15**
 Acres: **68.74**
 Date: **9/24/2018**



Maps Provided By:

 CUSTOMIZED ONLINE MAPPING
 © AgriData, Inc. 2018 www.AgriDataInc.com



Area Symbol: IL133, Soil Area Version: 10

Code	Soil Description	Acres	Percent of field	Il. State Productivity Index Legend	Corn Bu/A	Soybeans Bu/A	Wheat Bu/A	Alfalfa ^d hay, T/A	Crop productivity index for optimum management
8302A	Ambraw silty clay loam, 0 to 2 percent slopes, occasionally flooded	39.31	57.2%		154	50	61	0.00	114
8591A	Fults silty clay, 0 to 2 percent slopes, occasionally flooded	10.66	15.5%		155	50	59	0.00	115
1591A	Fults silty clay, undrained, 0 to 2 percent slopes, occasionally flooded	9.69	14.1%		155	50	59	0.00	115
8183A	Shaffton clay loam, 0 to 2 percent slopes, occasionally flooded	5.75	8.4%		155	51	60	0.00	116
8038B	Rocher loam, 2 to 5 percent slopes, occasionally flooded	3.33	4.8%		151	47	58	3.64	109
Weighted Average					154.2	49.9	60.2	0.18	114.2

Table: Optimum Crop Productivity Ratings for Illinois Soil by K.R. Olson and J.M. Lang, Office of Research, ACES, University of Illinois at Champaign-Urbana. Version: 1/2/2012 Amended Table S2 B811

Crop yields and productivity indices for optimum management (B811) are maintained at the following NRES web site: <http://soilproductivity.nres.illinois.edu/>

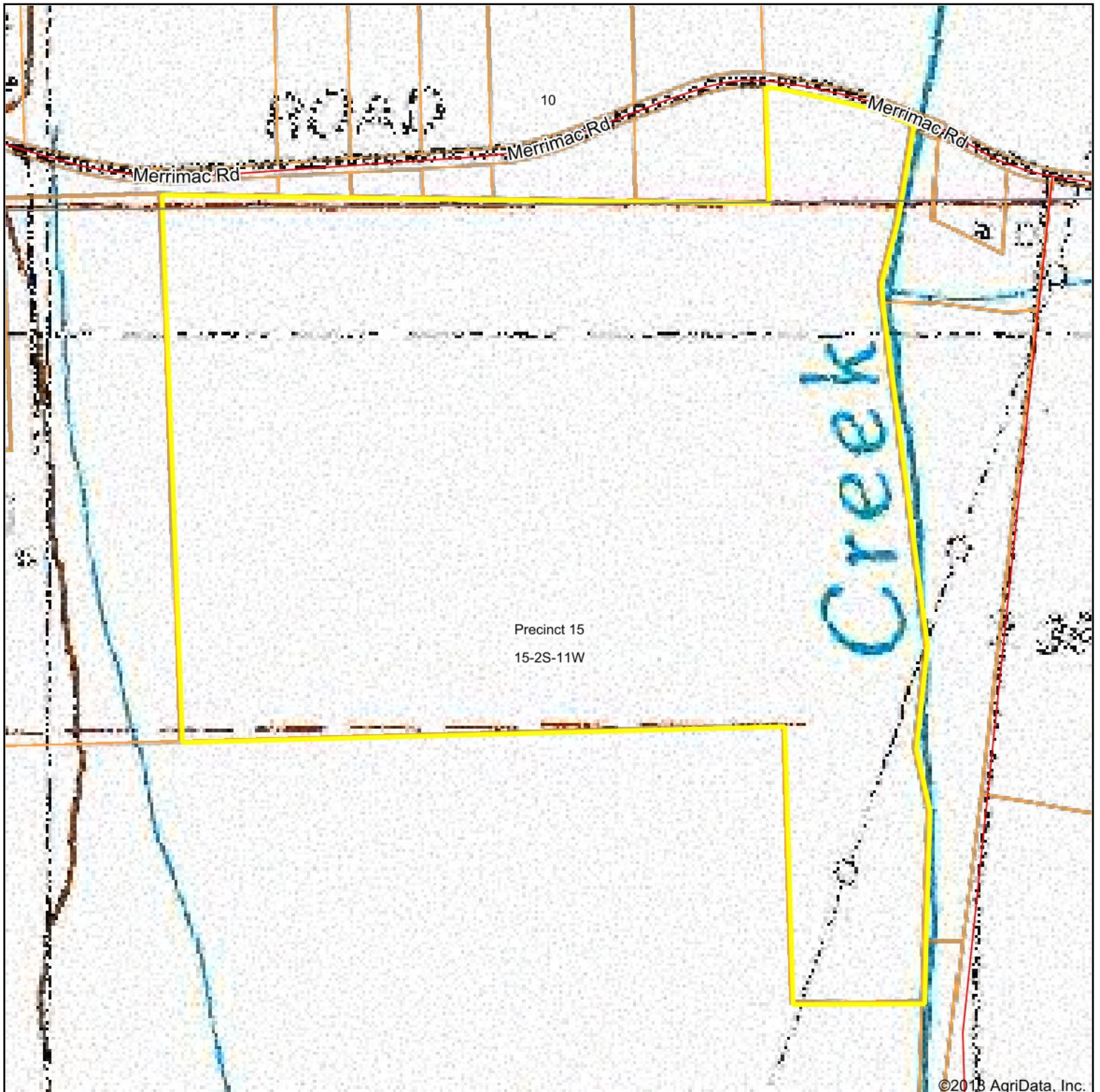
** Indexes adjusted for slope and erosion according to Bulletin 811 Table S3

^d Soils in the poorly drained group were not rated for alfalfa and are shown with a zero "0".

Soils data provided by USDA and NRCS. Soils data provided by University of Illinois at Champaign-Urbana.

*c: Using Capabilities Class Dominant Condition Aggregation Method

Topography Map



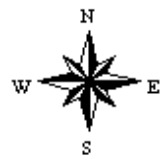
Maps Provided By:



map center: 38° 22' 3.3, -90° 18' 20.58

15-2S-11W
Monroe County
Illinois

0ft 404ft 807ft



9/24/2018