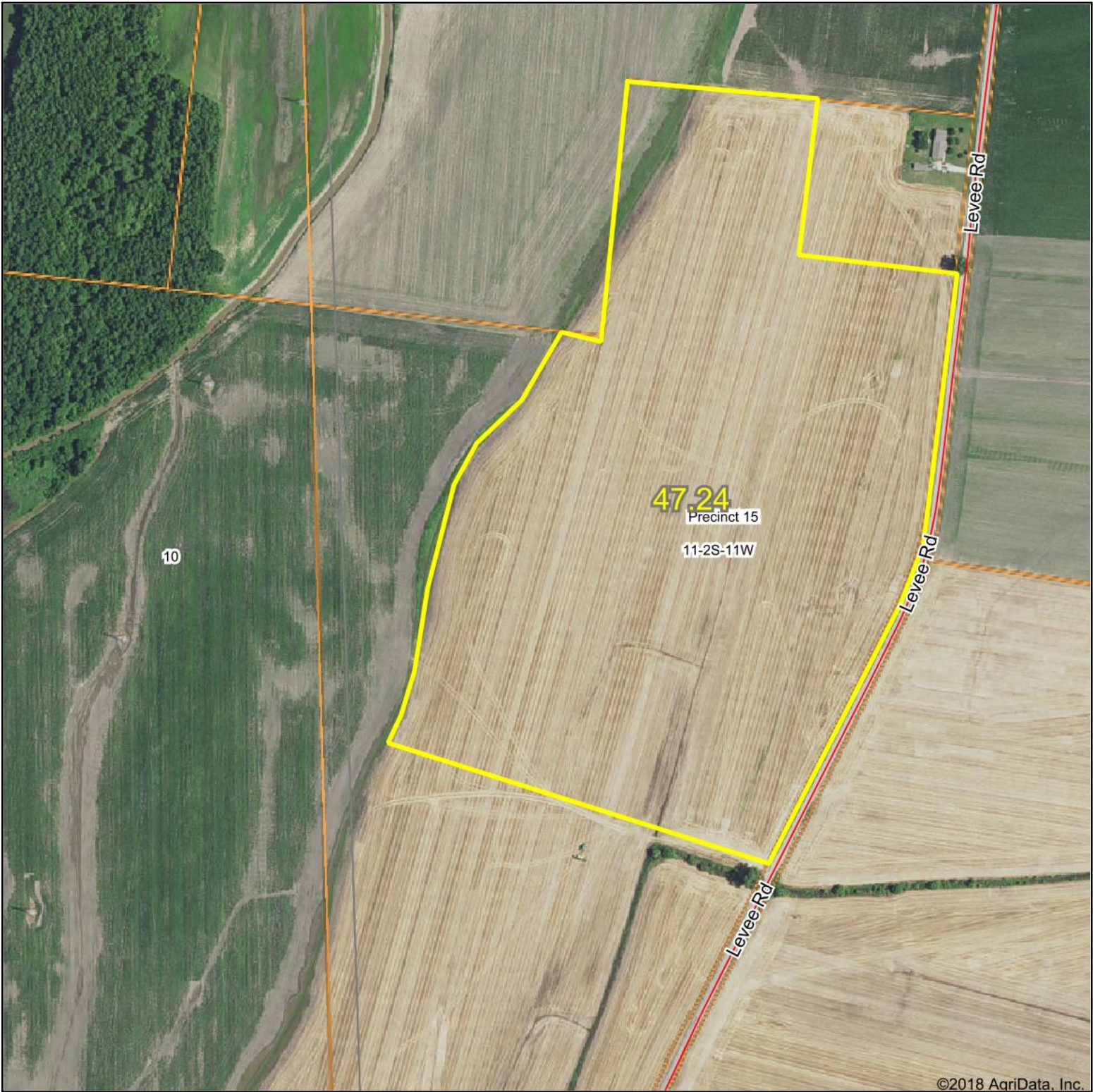


Aerial Map



©2018 AgriData, Inc.

map center: 38° 22' 48.14, -90° 17' 32.62



Maps Provided By:
 **surety**
CUSTOMIZED ONLINE MAPPING
© AgriData, Inc. 2018 www.AgriDataInc.com

11-2S-11W
Monroe County
Illinois



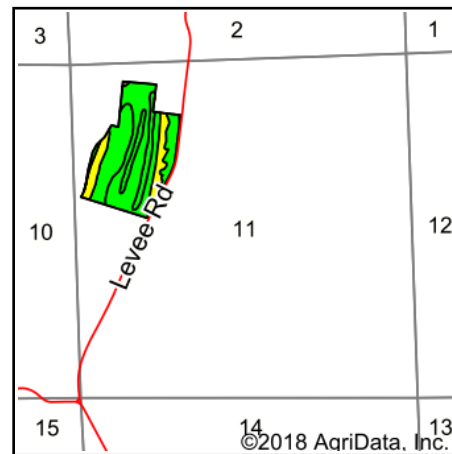
9/25/2018

Soils data provided by University of Illinois at Champaign-Urbana.

Soils Map



Soils data provided by USDA and NRCS.



State: **Illinois**
 County: **Monroe**
 Location: **11-2S-11W**
 Township: **Precinct 15**
 Acres: **47.24**
 Date: **9/25/2018**



Area Symbol: IL133, Soil Area Version: 10

| Code | Soil Description | Acres | Percent of field | Il. State Productivity Index Legend | Corn Bu/A | Soybeans Bu/A | Wheat Bu/A | Alfalfa ^d hay, T/A | Crop productivity index for optimum management |
|------------------|--|-------|------------------|-------------------------------------|-----------|---------------|------------|-------------------------------|--|
| 8591A | Fults silty clay, 0 to 2 percent slopes, occasionally flooded | 19.17 | 40.6% | | 155 | 50 | 59 | 0.00 | 115 |
| 8183A | Shaffton clay loam, 0 to 2 percent slopes, occasionally flooded | 13.61 | 28.8% | | 155 | 51 | 60 | 0.00 | 116 |
| 8304B | Landes very fine sandy loam, 2 to 5 percent slopes, occasionally flooded | 7.94 | 16.8% | | 135 | 45 | 55 | 3.39 | 100 |
| 8302A | Ambraw silty clay loam, 0 to 2 percent slopes, occasionally flooded | 6.35 | 13.4% | | 154 | 50 | 61 | 0.00 | 114 |
| 8592A | Nameoki silty clay, 0 to 2 percent slopes, occasionally flooded | 0.17 | 0.4% | | 163 | 51 | 63 | 0.00 | 120 |
| Weighted Average | | | | | 151.5 | 49.5 | 58.9 | 0.57 | 112.7 |

Table: Optimum Crop Productivity Ratings for Illinois Soil by K.R. Olson and J.M. Lang, Office of Research, ACES, University of Illinois at Champaign-Urbana. Version: 1/2/2012 Amended Table S2 B811

Crop yields and productivity indices for optimum management (B811) are maintained at the following NRES web site: <http://soilproductivity.nres.illinois.edu/>

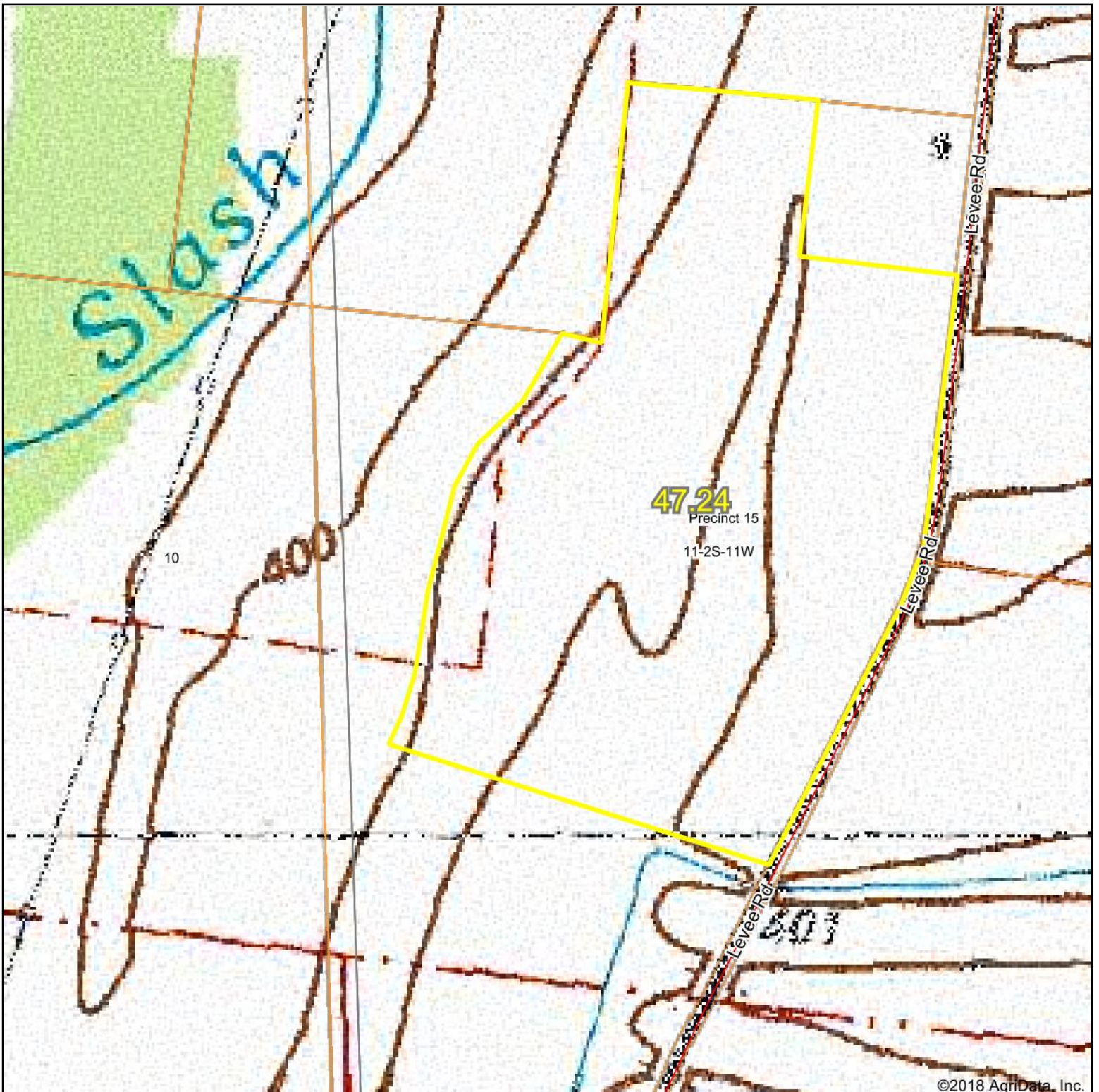
** Indexes adjusted for slope and erosion according to Bulletin 811 Table S3

^d Soils in the poorly drained group were not rated for alfalfa and are shown with a zero "0".

Soils data provided by USDA and NRCS. Soils data provided by University of Illinois at Champaign-Urbana.

*c: Using Capabilities Class Dominant Condition Aggregation Method

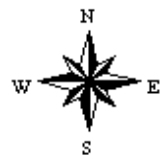
Topography Map



map center: 38° 22' 48.14, -90° 17' 32.62

0ft 430ft 860ft

11-2S-11W
Monroe County
Illinois



9/25/2018



Maps Provided By:

