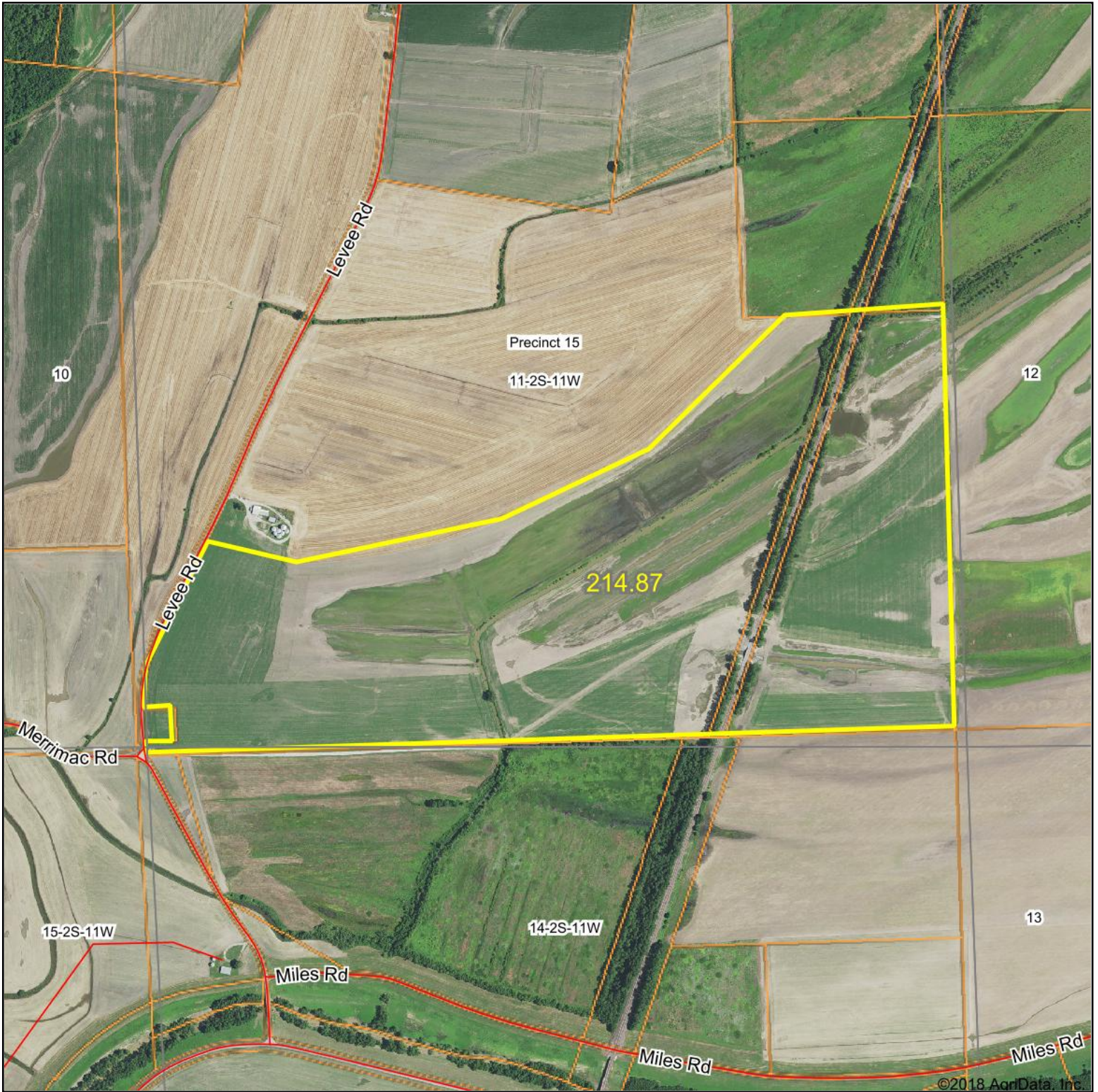


Aerial Map



map center: 38° 22' 23.64, -90° 17' 6.45

0ft 1010ft 2021ft



Maps Provided By:



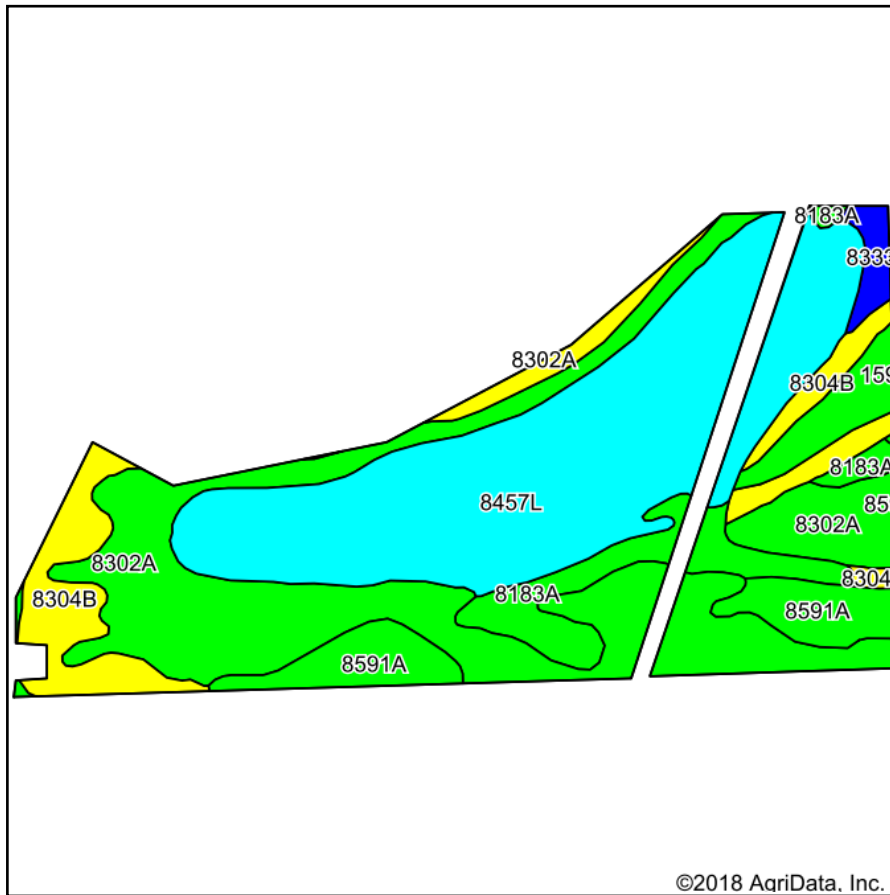
© AgriData, Inc. 2018 www.AgrDataInc.com

11-2S-11W
Monroe County
Illinois



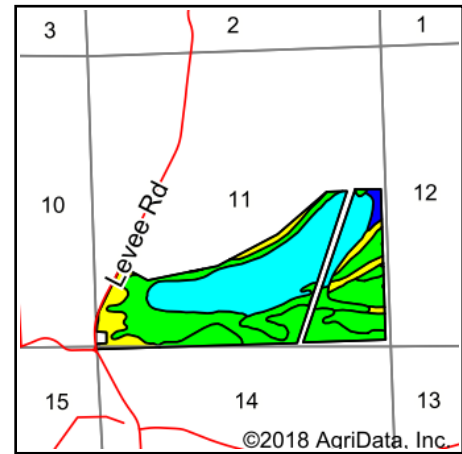
10/2/2018

Soils Map



Soils data provided by USDA and NRCS.

©2018 AgriData, Inc.



State: **Illinois**
 County: **Monroe**
 Location: **11-2S-11W**
 Township: **Precinct 15**
 Acres: **210.9**
 Date: **10/2/2018**



Maps Provided By:

 CUSTOMIZED ONLINE MAPPING
 © AgriData, Inc. 2018 www.AgriDataInc.com



Area Symbol: IL133, Soil Area Version: 10

Code	Soil Description	Acres	Percent of field	Il. State Productivity Index Legend	Corn Bu/A	Soybeans Bu/A	Wheat Bu/A	Alfalfa ^d hay, T/A	Crop productivity index for optimum management
8457L	Booker clay, 0 to 2 percent slopes, occasionally flooded, long duration	79.98	37.9%		116	41	44	0.00	89
8302A	Ambraw silty clay loam, 0 to 2 percent slopes, occasionally flooded	74.03	35.1%		154	50	61	0.00	114
8304B	Landes very fine sandy loam, 2 to 5 percent slopes, occasionally flooded	23.95	11.4%		135	45	55	3.39	100
8591A	Fults silty clay, 0 to 2 percent slopes, occasionally flooded	15.19	7.2%		155	50	59	0.00	115
8183A	Shaffton clay loam, 0 to 2 percent slopes, occasionally flooded	14.89	7.1%		155	51	60	0.00	116
8333A	Wakeland silt loam, 0 to 2 percent slopes, occasionally flooded	2.86	1.4%		174	56	68	0.00	128
Weighted Average					137.8	46.2	53.8	0.38	103.3

Table: Optimum Crop Productivity Ratings for Illinois Soil by K.R. Olson and J.M. Lang, Office of Research, ACES, University of Illinois at Champaign-Urbana. Version: 1/2/2012 Amended Table S2 B811

Crop yields and productivity indices for optimum management (B811) are maintained at the following NRES web site: <http://soilproductivity.nres.illinois.edu/>

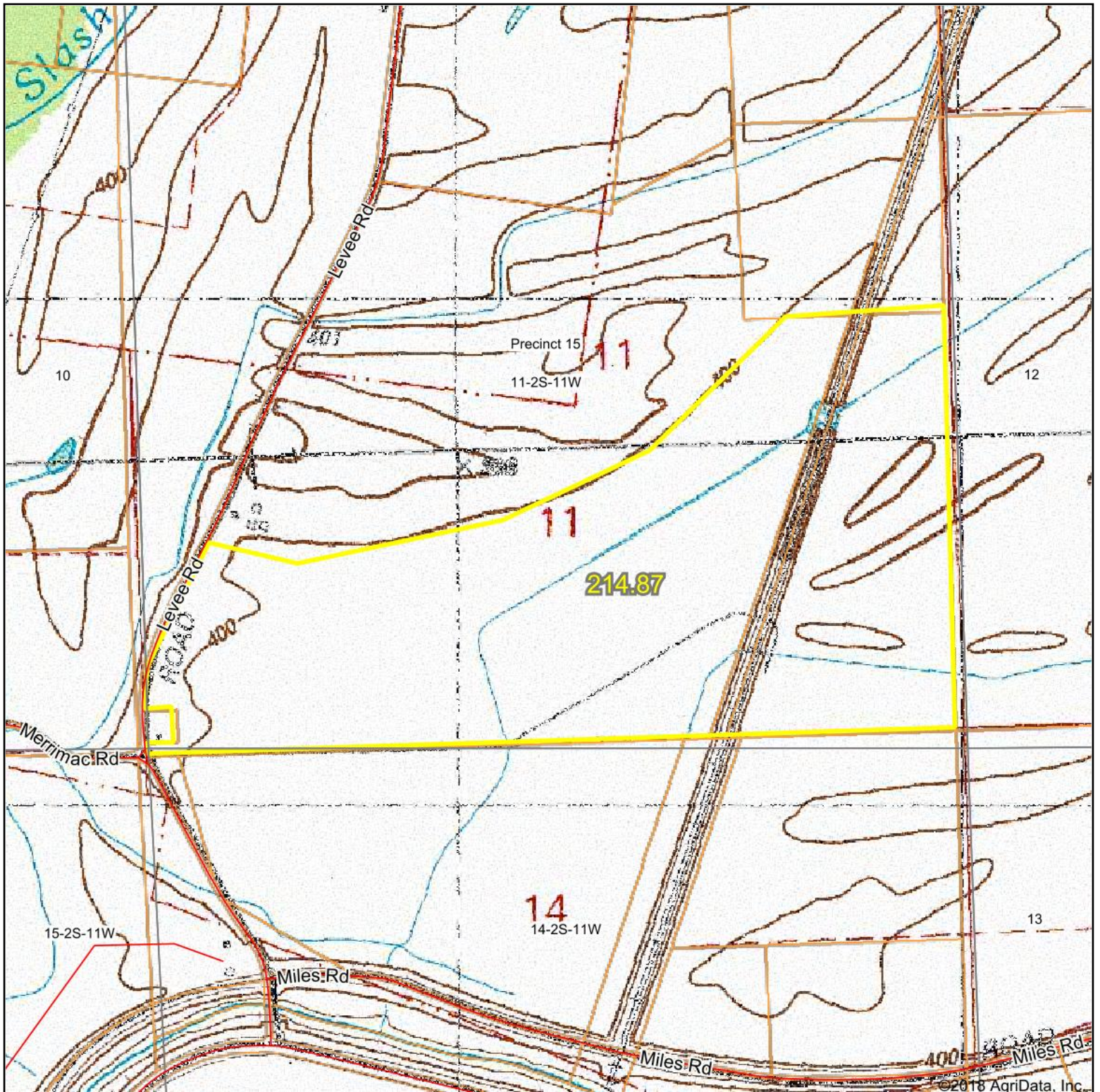
** Indexes adjusted for slope and erosion according to Bulletin 811 Table S3

^d Soils in the poorly drained group were not rated for alfalfa and are shown with a zero "0".

Soils data provided by USDA and NRCS. Soils data provided by University of Illinois at Champaign-Urbana.

*c: Using Capabilities Class Dominant Condition Aggregation Method

Topography Map



map center: 38° 22' 23.64, -90° 17' 6.45

0ft 1010ft 2021ft



Maps Provided By:



© AgriData, Inc. 2018

www.AgriDataInc.com

11-2S-11W
Monroe County
Illinois



10/2/2018