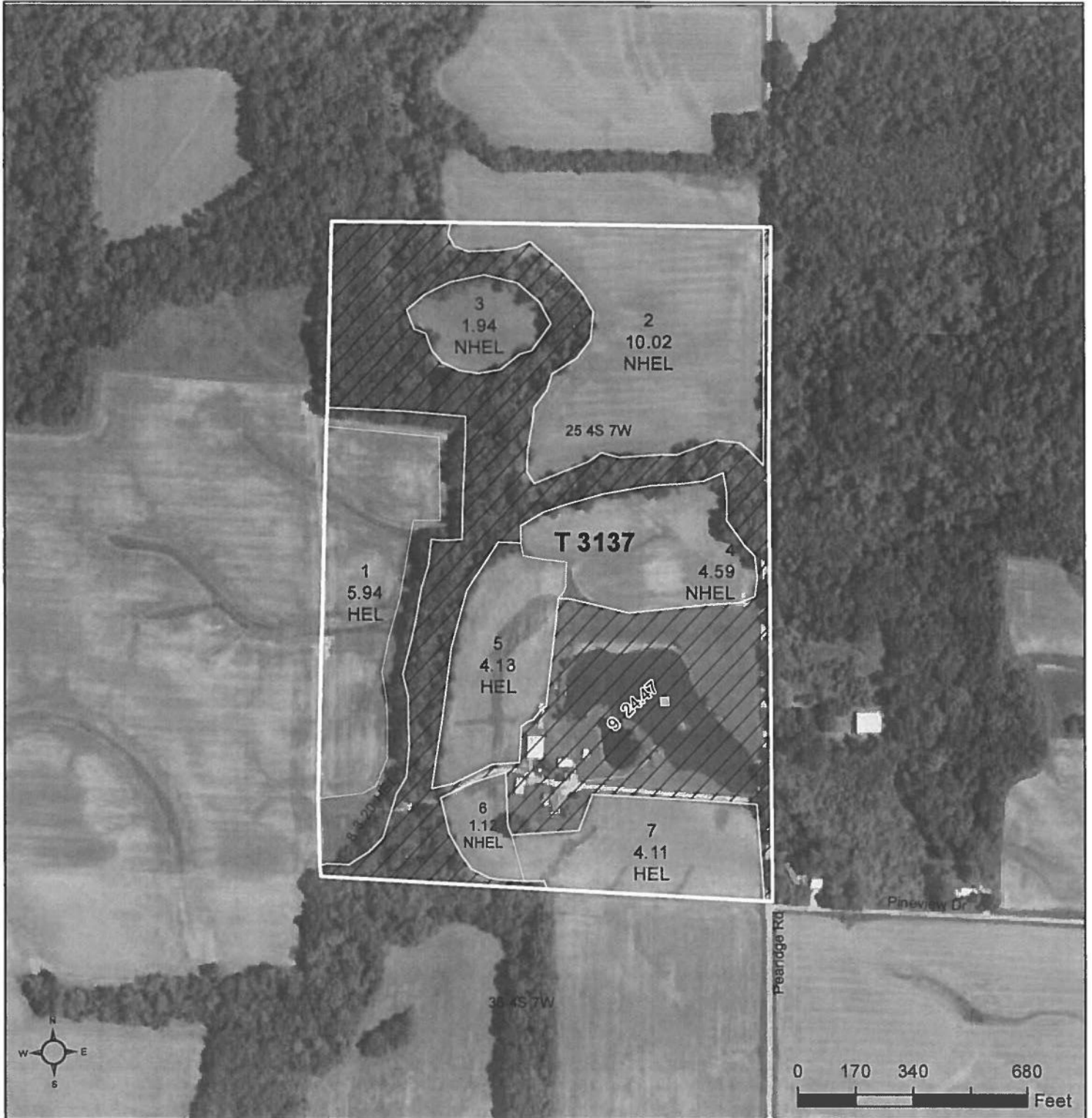




United States
Department of
Agriculture

Randolph County, Illinois



Common Land Unit Tract Boundary

Non-Cropland

Cropland

2023 Program Year
Map Created October 11, 2022

- Wetland Determination Identifiers**
- Restricted Use
 - ▽ Limited Restrictions
 - Exempt from Conservation
 - Compliance Provisions

Tract Cropland Total: 35.05 acres

United States Department of Agriculture (USDA) Farm Service Agency (FSA) maps are for FSA Program administration only. This map does not represent a legal survey or reflect actual ownership; rather it depicts the information provided directly from the producer and/or National Agricultural Imagery Program (NAIP) imagery. The producer accepts the data 'as is' and assumes all risks associated with its use. USDA-FSA assumes no responsibility for actual or consequential damage incurred as a result of any user's reliance on this data outside FSA Programs. Wetland identifiers do not represent the size, shape, or specific determination of the area. Refer to your original determination (CPA-026 and attached maps) for exact boundaries and determinations or contact USDA Natural Resources Conservation Service (NRCS).