

BASEMENT
12'10" x 20'6"



DINING ROOM
10'0" x 8'2"

BATH
7'4" x 4'11"

BREAKFAST NOOK
7'6" x 5'3"

LAUNDRY
6'6" x 6'0"

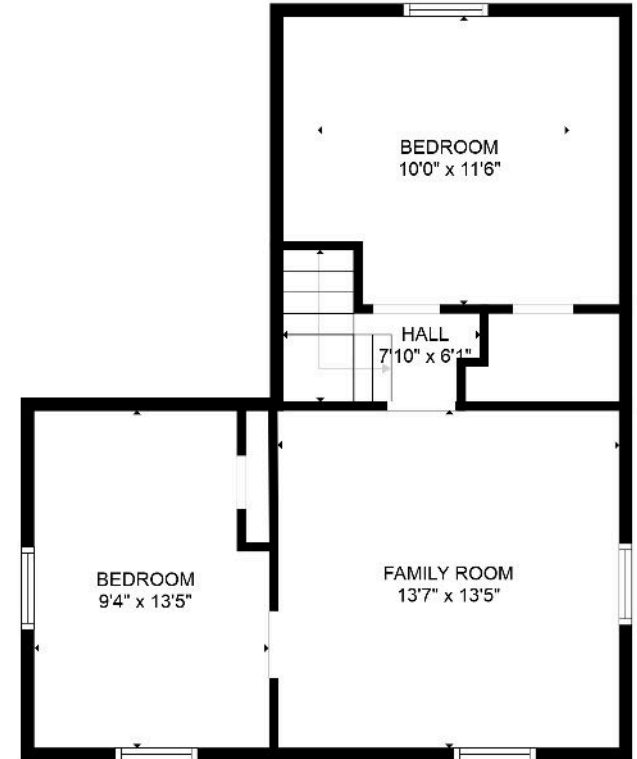
OFFICE
10'0" x 6'11"

KITCHEN
13'4" x 10'1"

PRIMARY BEDROOM
10'0" x 13'5"

LIVING ROOM
13'4" x 13'5"

MAIN FLOOR



BEDROOM
10'0" x 11'6"

HALL
7'10" x 6'4"

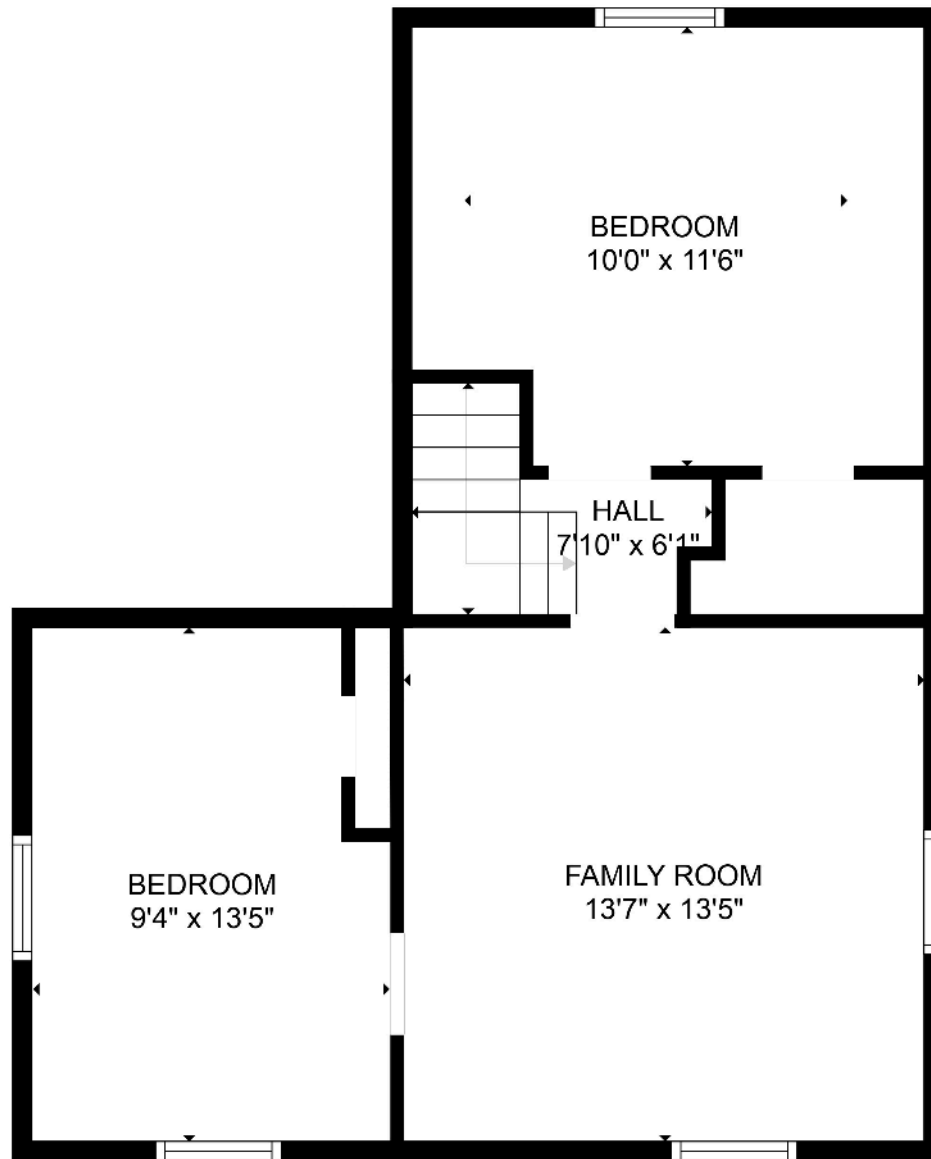
BEDROOM
9'4" x 13'5"

FAMILY ROOM
13'7" x 13'5"

SECOND FLOOR

GROSS INTERNAL AREA
BSMT: 207 sq. ft. MAIN: 731 sq. ft.
UPPER: 522 sq. ft.
TOTAL: 1460 sq. ft.

SIZES AND DIMENSIONS ARE APPROXIMATE, ACTUAL MAY VARY.



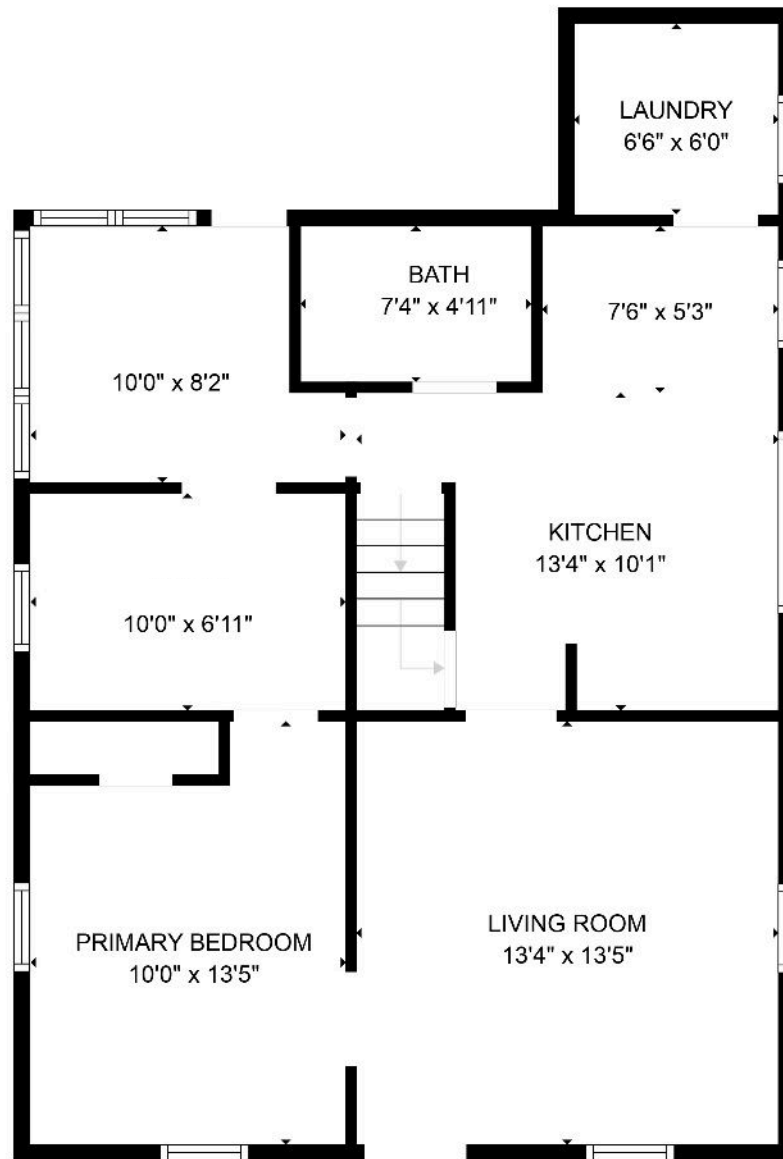
GROSS INTERNAL AREA

FLOOR 1: 207 sq. ft, FLOOR 2: 731 sq. ft

FLOOR 3: 522 sq. ft

TOTAL: 1460 sq. ft

SIZES AND DIMENSIONS ARE APPROXIMATE, ACTUAL MAY VARY.



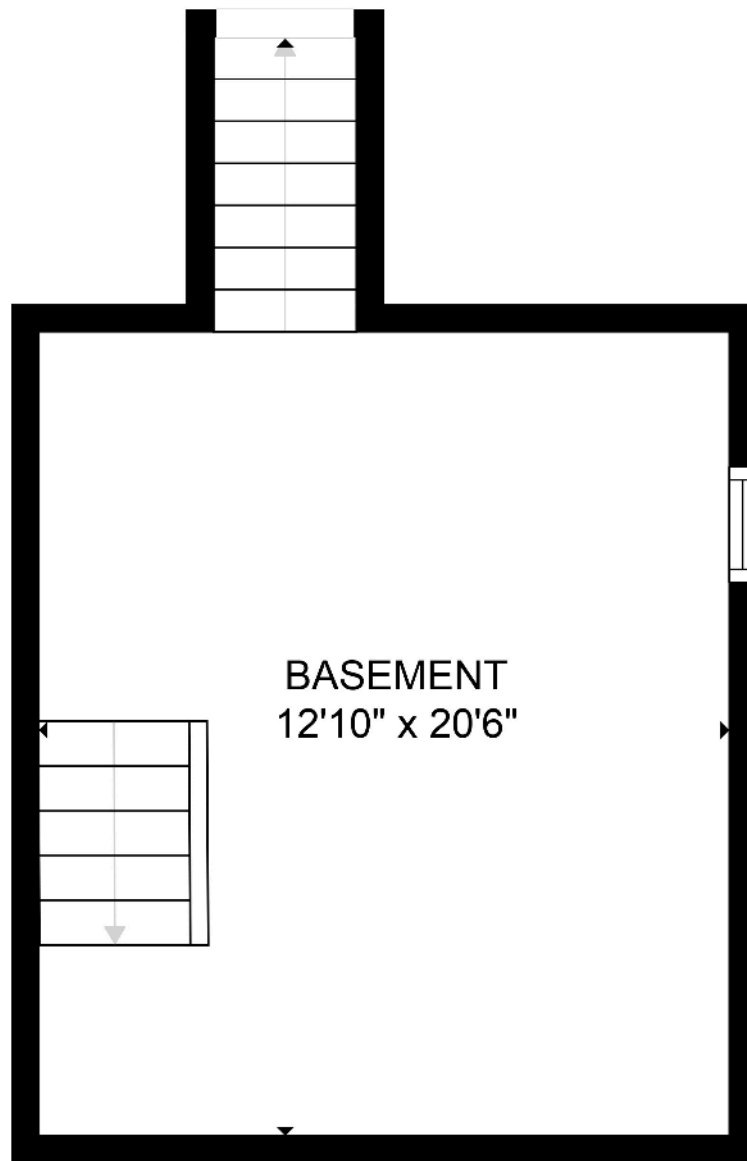
GROSS INTERNAL AREA

FLOOR 1: 207 sq. ft, FLOOR 2: 731 sq. ft

FLOOR 3: 522 sq. ft

TOTAL: 1460 sq. ft

SIZES AND DIMENSIONS ARE APPROXIMATE, ACTUAL MAY VARY.



GROSS INTERNAL AREA
FLOOR 1: 207 sq. ft, FLOOR 2: 731 sq. ft
FLOOR 3: 522 sq. ft
TOTAL: 1460 sq. ft

SIZES AND DIMENSIONS ARE APPROXIMATE, ACTUAL MAY VARY.