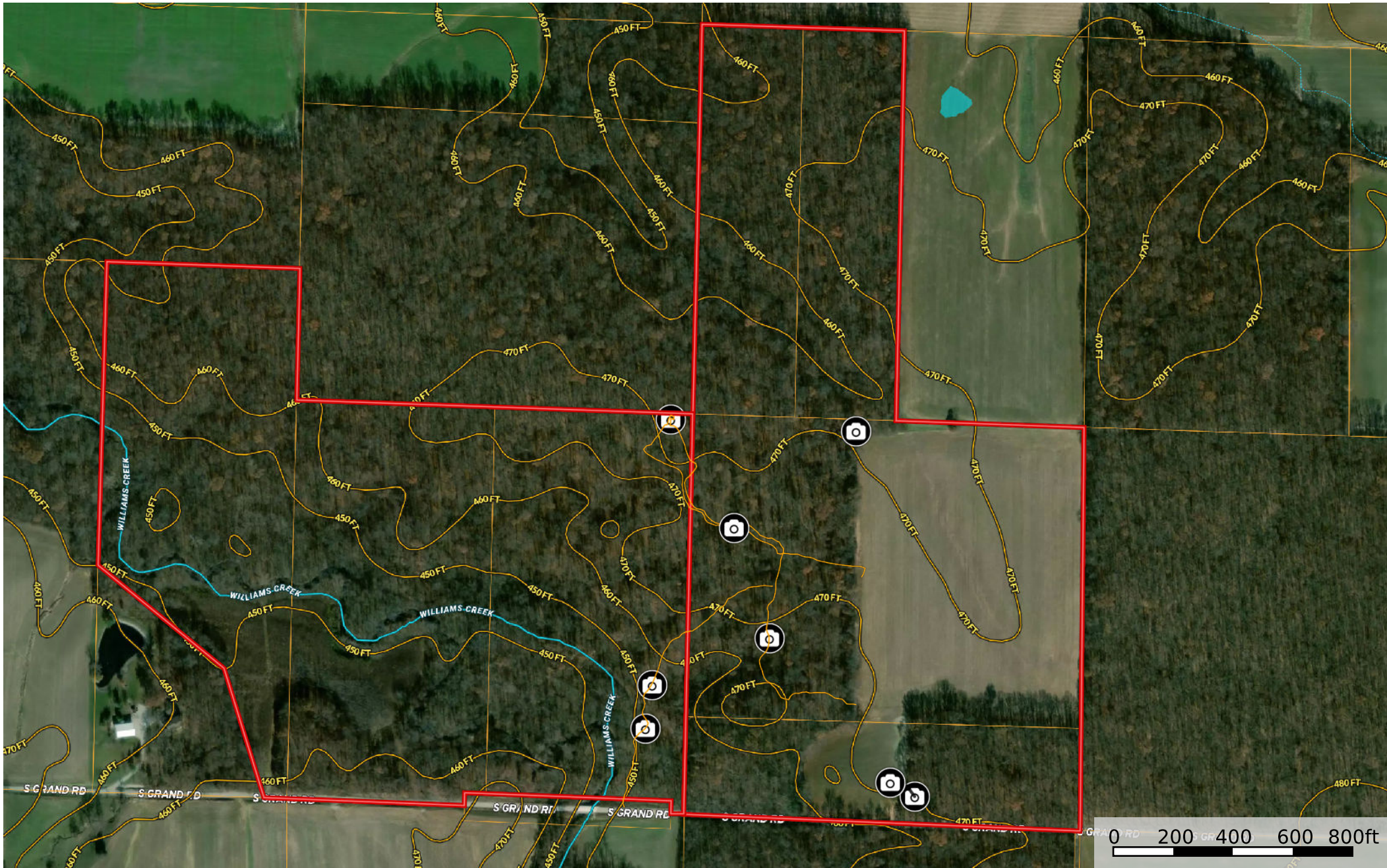


592A_WashingtonCo_120Ac_Kirchner

Washington County, Illinois, 120 AC +/-



- Photo Point
- Tour
- Boundary
- Stream, Intermittent
- River/Creek
- Water Body
- NOT AVAILABLE
- Voltage 0 - 99 KV
- Voltage 100 - 161 KV
- Voltage 220 - 287 KV
- Voltage 345 KV
- Voltage 500 KV