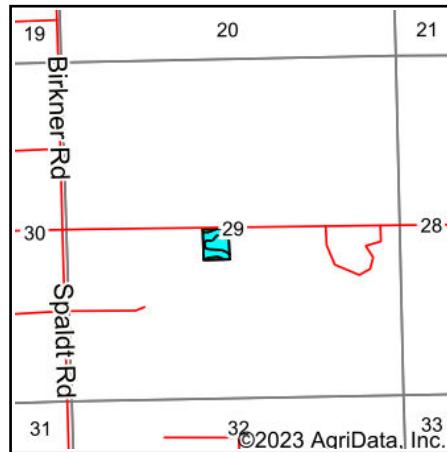
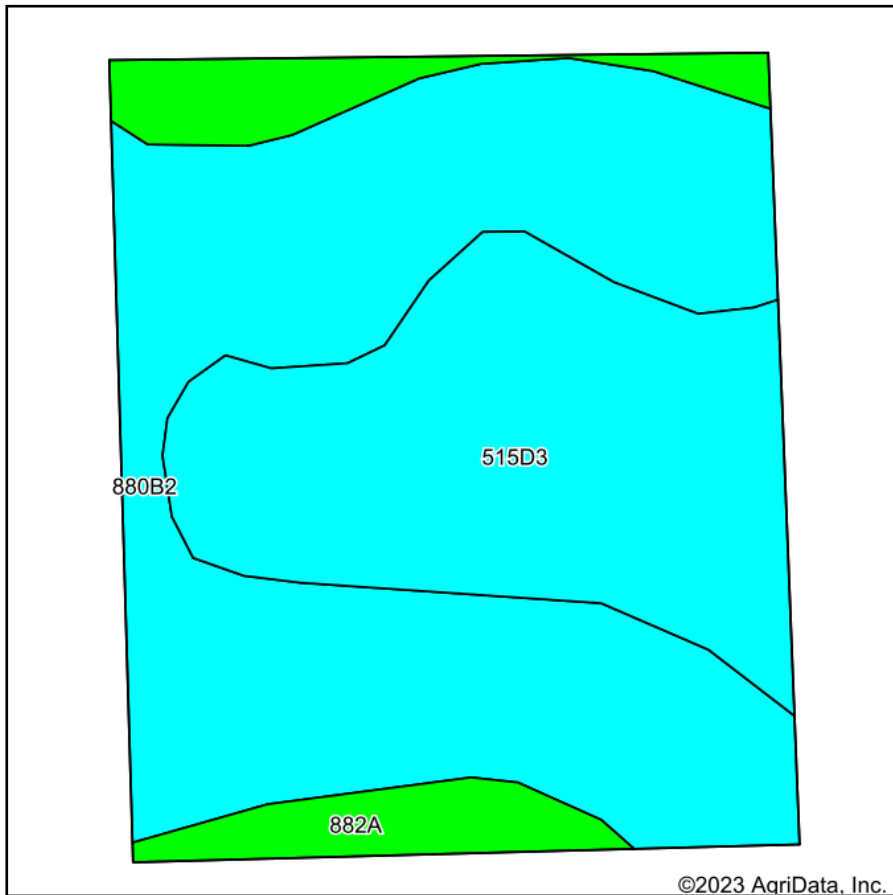


Soils Map



State: **Illinois**
 County: **St. Clair**
 Location: **29-2S-8W**
 Township: **Prairie Du Long**
 Acres: **4.6**
 Date: **6/14/2023**



Maps Provided By:



Area Symbol: IL163, Soil Area Version: 14

Code	Soil Description	Acres	Percent of field	II. State Productivity Index Legend	Corn Bu/A	Soybeans Bu/A	Wheat Bu/A	Alfalfa <i>d</i> hay, T/A	Crop productivity index for optimum management
**880B2	Coulterville-Darmstadt silt loams, 2 to 5 percent slopes, eroded	2.55	55.4%		**129	**43	**47	0.00	**97
**515D3	Bunkum silty clay loam, 10 to 18 percent slopes, severely eroded	1.58	34.3%		**118	**41	**45	**3.15	**89
882A	Oconee-Darmstadt-Coulterville silt loams, 0 to 2 percent slopes	0.47	10.2%		148	48	56	0.00	110
Weighted Average					127.2	42.8	47.2	1.08	95.6

Table: Optimum Crop Productivity Ratings for Illinois Soil by K.R. Olson and J.M. Lang, Office of Research, ACES, University of Illinois at Champaign-Urbana. Version: 1/2/2012 Amended Table S2 B811

Crop yields and productivity indices for optimum management (B811) are maintained at the following NRES web site: <http://soilproductivity.nres.illinois.edu/>

** Indexes adjusted for slope and erosion according to Bulletin 811 Table S3

d Soils in the poorly drained group were not rated for alfalfa and are shown with a zero "0".

Soils data provided by USDA and NRCS. Soils data provided by University of Illinois at Champaign-Urbana.