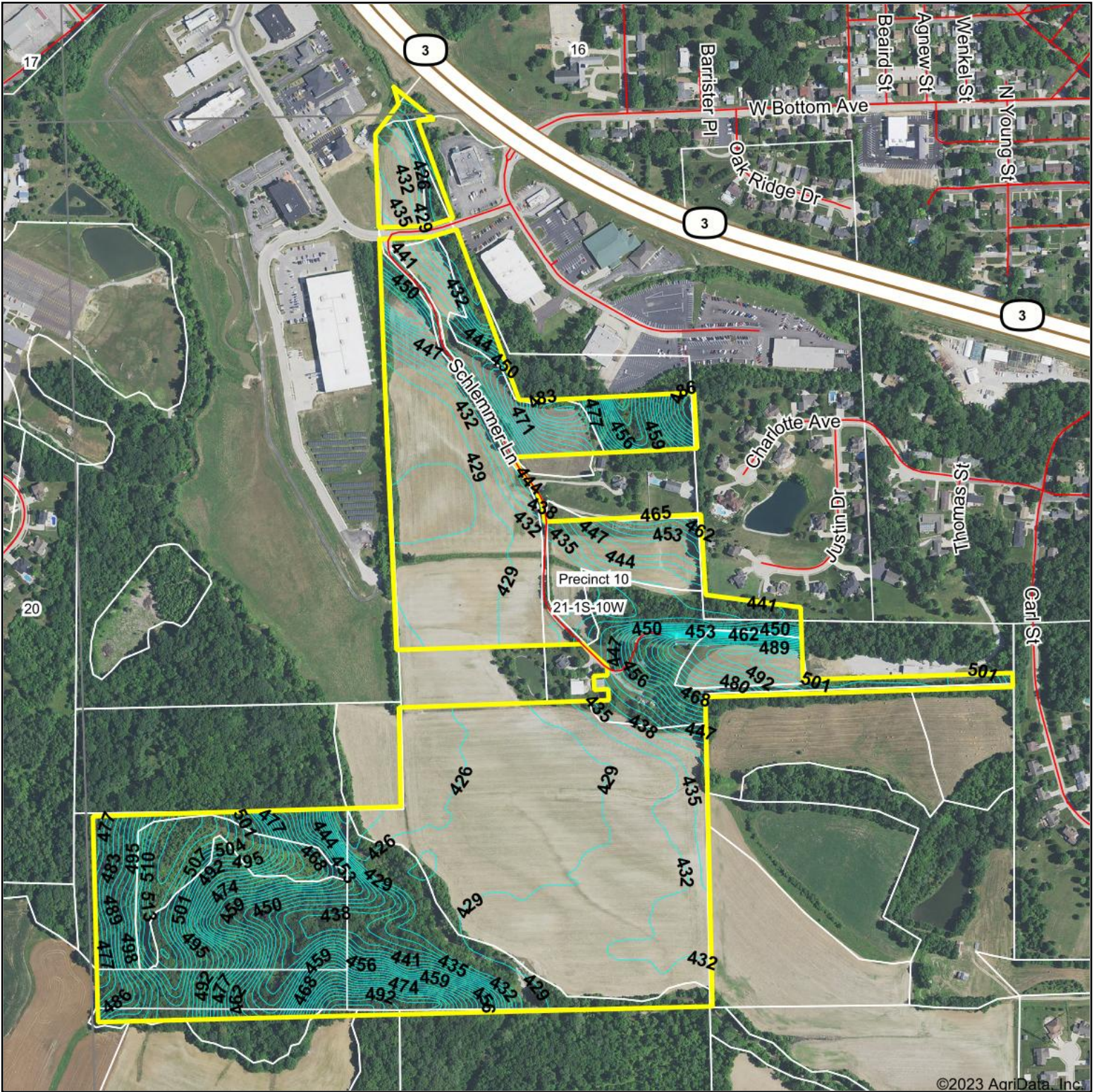


Topography Contours



©2023 AgriData, Inc.



Maps Provided By:



© AgriData, Inc. 2023 www.AgriDataInc.com

Field borders provided by Farm Service Agency as of 5/21/2008.

Source: USGS 10 meter dem

Interval(ft): 3.0

Min: 417.4

Max: 518.1

Range: 100.7

Average: 447.2

Standard Deviation: 25.33 ft

0ft 674ft 1348ft



6/20/2023

21-1S-10W
Monroe County
Illinois

Boundary Center: 38° 26' 11.25, -90° 12' 44.91