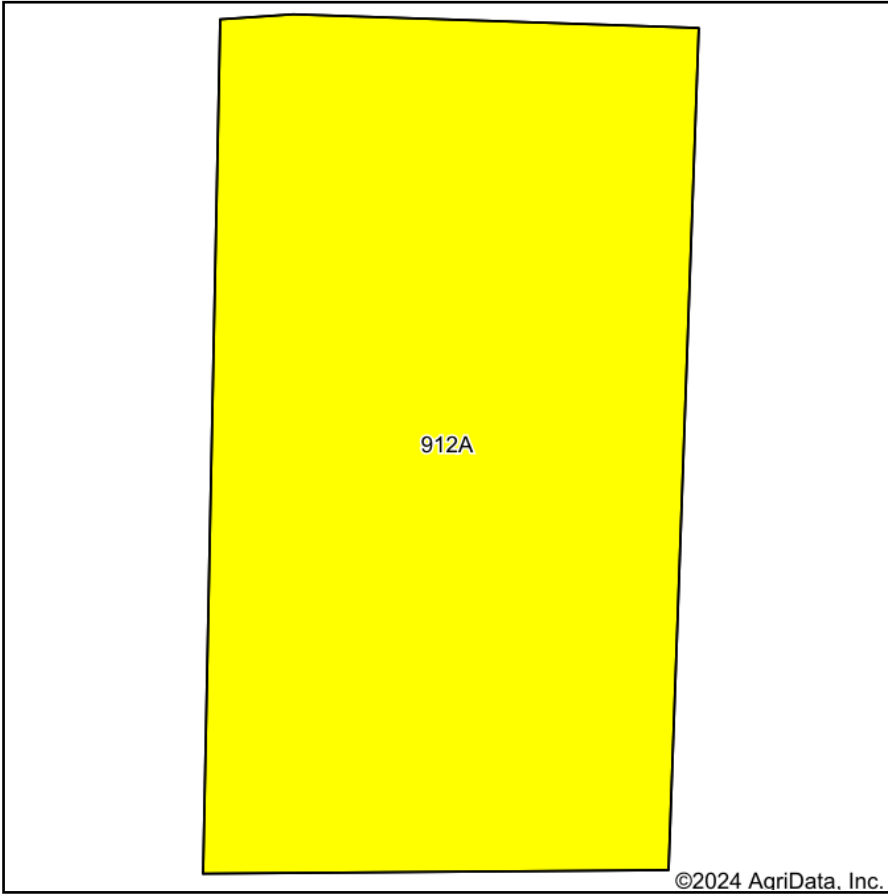
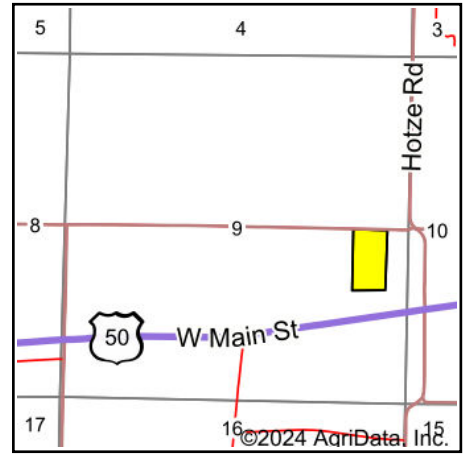


Soils Map



Soils data provided by USDA and NRCS.



State: **Illinois**
 County: **Marion**
 Location: **9-2N-2E**
 Township: **Salem**
 Acres: **10.97**
 Date: **1/10/2024**



Maps Provided By:



Area Symbol: IL121, Soil Area Version: 20									
Code	Soil Description	Acres	Percent of field	Il. State Productivity Index Legend	Corn Bu/A	Soybeans Bu/A	Wheat Bu/A	Alfalfa ^d hay, T/A	Crop productivity index for optimum management
912A	Hoyleton-Darmstadt silt loams, 0 to 2 percent slopes	10.97	100.0%		135	45	52	0.00	102
Weighted Average					135	45	52	*-	102

Table: Optimum Crop Productivity Ratings for Illinois Soil EFOTG are sourced from Bulletin 811 calculated Map Unit Base Yield Indices, and adjusted (Adj) for slope, erosion, flooding, and surface texture. Publication Date: 02-08-2023

Crop yields and productivity (B811 EFOTG) are maintained at the following USDA web site: 2023 Illinois Soil Productivity and Yield Indices: <https://efotg.sc.egov.usda.gov/#/state/IL/documents/section=2&folder=52809>

^d Soils in the poorly drained group were not rated for alfalfa and are shown with a zero "0".

Soils data provided by USDA and NRCS. Soils data provided by University of Illinois at Champaign-Urbana.