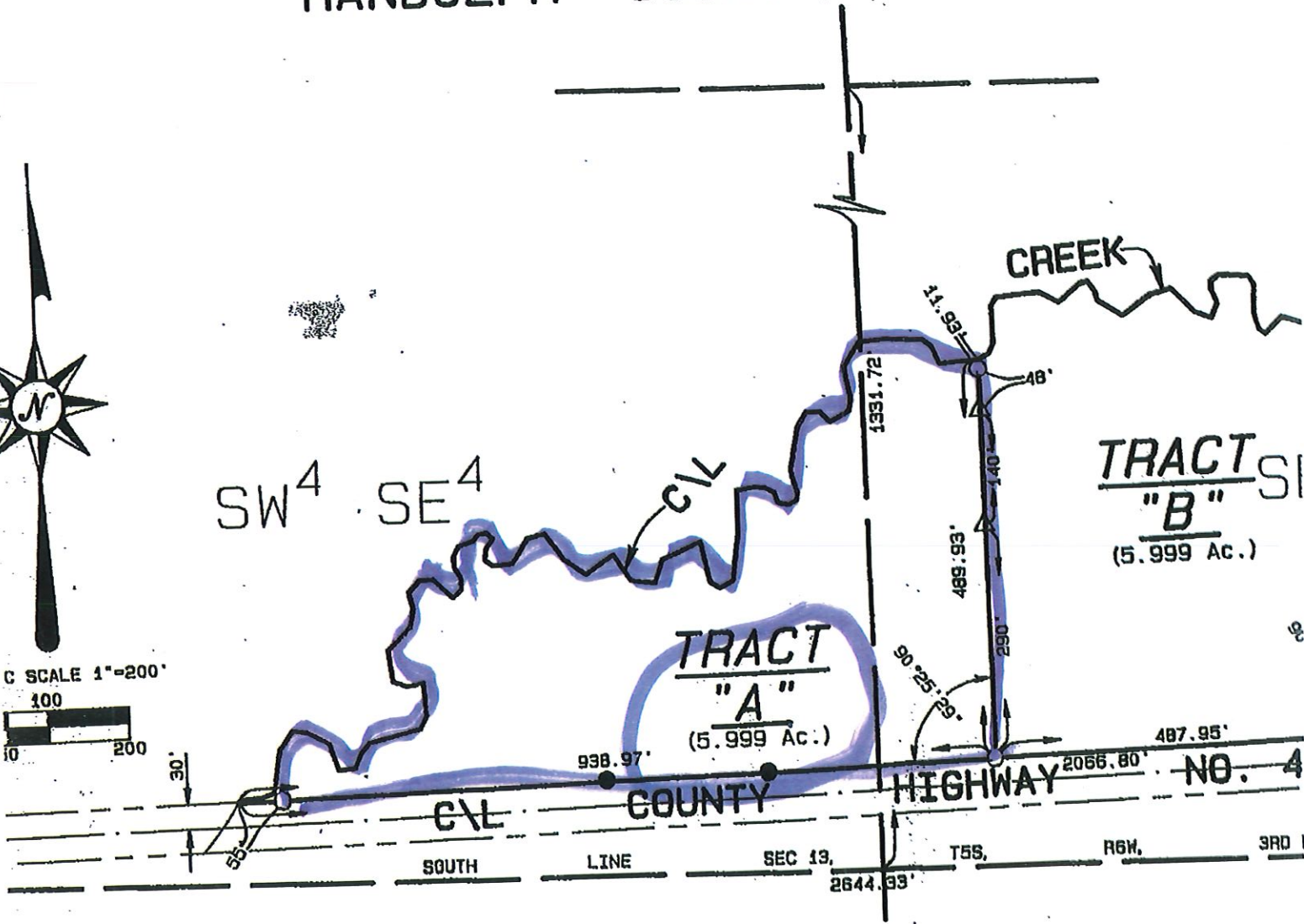


PLAT OF SURVEY

PART OF THE SOUTH HALF OF THE SOUTHEAST
SECTION 13, TOWNSHIP 5 SOUTH, RANGE 6
OF THE
THIRD PRINCIPAL MERIDIAN
RANDOLPH COUNTY, ILLINOIS



SCALE 1"=200'
100
10 200



DE RANDOLPH

hereby certify that on January 17th, 18th, 19th and 27th, 2006, at the request of Janice M. Wade
is tracts of land: